



A·K
BELLINGER

· GALLERY ·

Sam Field

PITTWATER

ALLISON BELLINGER GALLERY

0439 180 346

AKBELLINGER@OUTLOOK.COM

INSTA AKBELLINGER

WWW.AKBELLINGERGALLERY.COM

Sam Field is an artist based in Marion Bay, lutruwita/Tasmania. Through paint, Field explores the wonder of the Australian landscape adopting a bold aesthetic that is distinctively raw, yet vibrant. His creative approach aims to critique the many cultural narratives that underpin contemporary Australia, whilst unpicking the many mistruths that are woven into the fabric of recorded history. Field's paintings also celebrate the raw beauty of the landscape, as well as depicting the trials and tribulations of those who inhabit it.

The anecdotes that Field visualises through his work can be understood as artistic postcards, tracing his travels whilst in search for his creative sense of place. The resulting compositions are undeniably Australian, simultaneously playful and solemn, powerful and restless, and despite often being laden with humour, they never shy away from uncomfortable truths.

Sam Field completed a Bachelor of Fine Arts at the University of Tasmania in 2016. During the early stages of his career Field worked and painted alongside contemporary artist Luke Sciberras. Field was a finalist in The Hadley's Art Prize 2018 and the Henry Jones Art Prize in 2019, winning the Contemporary Arts Tasmania prize in 2016.



*The Flight of the
Lyrebird*

70 x 72 cm
Oil on Board,
Framed
\$4100



*Sky, Earth and
Water (Morning
seen from Bonnie
Doon)*

110 x 120 cm
Oil on Board,
Framed
\$6400



*Rangers House
(The Basin)*

54 x 64 cm
Oil on Board,
Framed
\$3300



The Arrival

48 x 58 cm
Oil on Board,
Framed
\$3000



*Blue Bottle,
Evening Tide*

90 x 120 cm
Oil on Board,
Framed
\$5900



*The Green
Canoe #2*

90 x 120 cm
Oil on Board,
Framed
\$5900



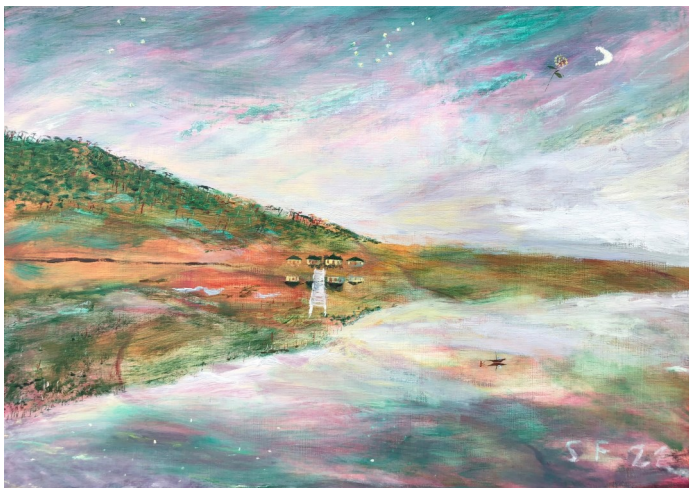
Bad Hair Day

90 x 120 cm
Oil on Board,
Framed
\$5900



The Grape Thief

90 x 120 cm
Oil on Board,
Framed
\$5900



*Lantana and Iron Pot
Over Currawong*

50 x 70 cm
Oil on Board,
Framed
\$3500



The Headland

43 x 61 cm
Oil on Board,
Framed
\$2900

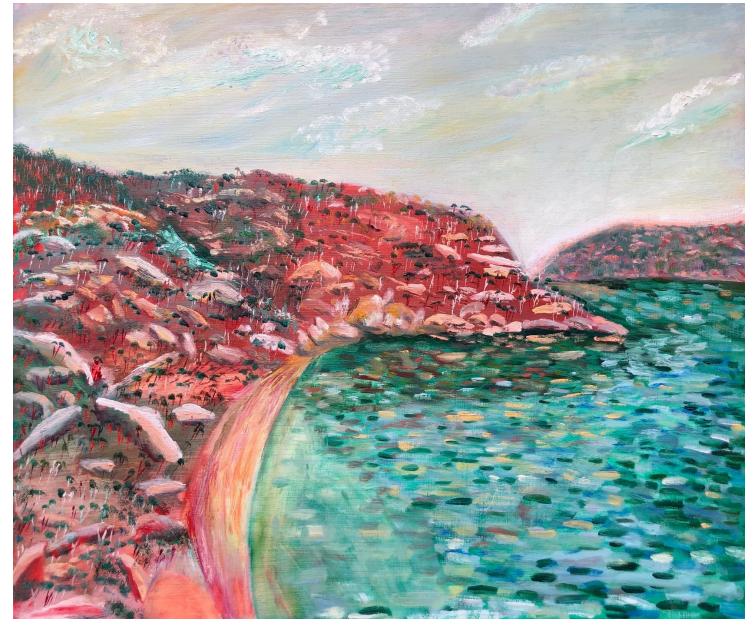
Sam Field

PITTWATER



*Gynea Lilies
On The Plateau*

38 x 48 cm
Oil on Board,
Framed
\$2750



*Resolute Beach
(6 Clouds)*

54 x 64 cm
Oil on Board,
Framed
\$3300



The Green Canoe

70 x 72 cm
Oil on Board,
Framed
\$4100



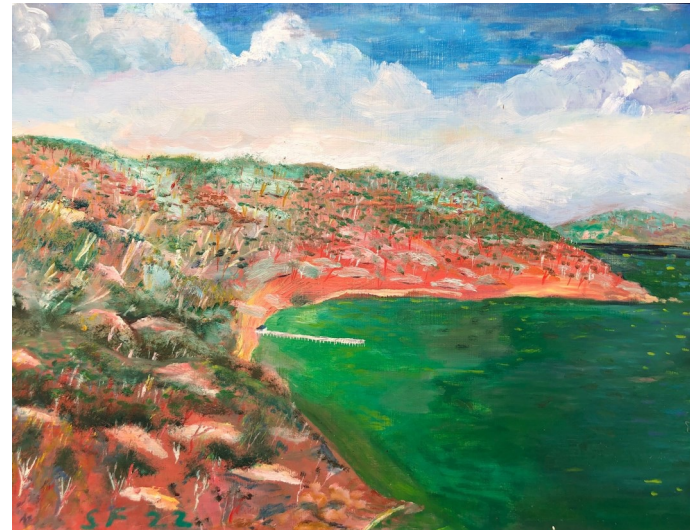
*Waiting at the
Ferry Wharf
(Pink and Blue)*

53 x 68 cm
Oil on Board,
Framed
\$3300



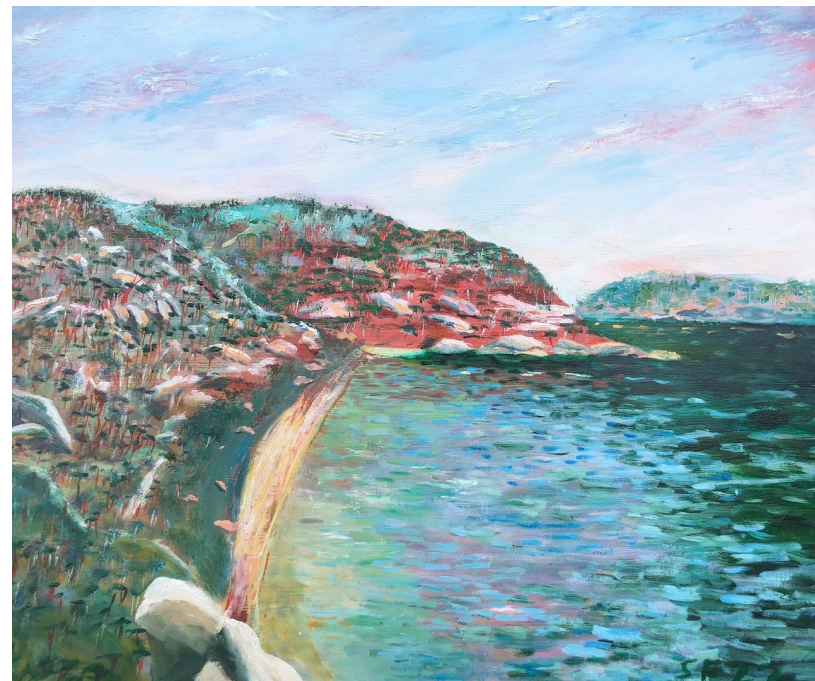
*Workers Cottages
at Currawong*

49 x 64 cm
Oil on Board,
Framed
\$3100



*Waiting at the
Ferry Wharf
(Red and Green)*

49 x 64 cm
Oil on Board,
Framed
\$3100



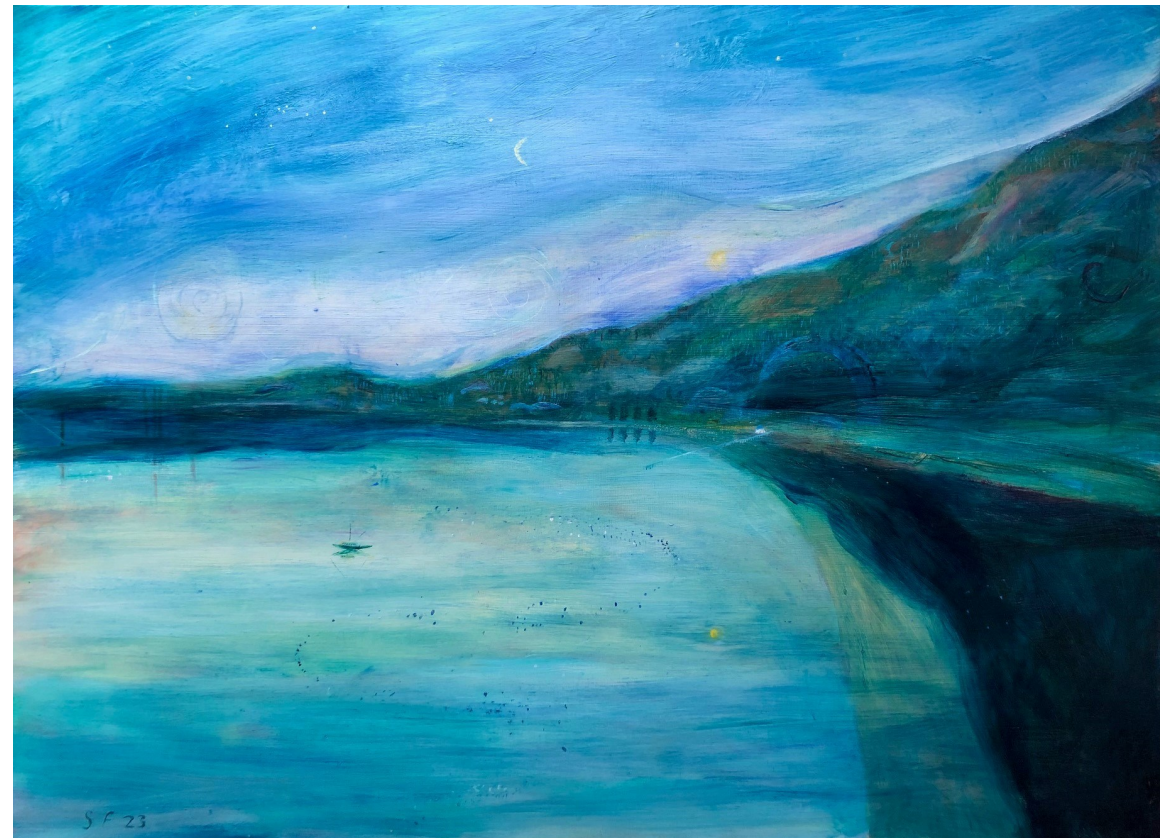
*Resolute Beach
(Afternoon Study)*

54 x 64 cm
Oil on Board,
Framed
\$3300



Heave To!
(Strong Nor'easter)

64 x 72 cm
Oil on Board,
Framed
\$3700



A Tailer Sailer
Under a Boomerang Moon

90 x 120 cm
Oil on Board,
Framed
\$5900



Safe Harbour

49 x 64 cm
Oil on Board,
Framed
\$3100

*Man in High Pants
Looking for Smoke*

90 x 120 cm
Oil on
Board,
Framed
\$5900



*Onshore/Offshore
(Barrenjoey Head)*

90 x 120 cm
Oil on Board,
Framed
\$5900



AK Bellinger Gallery is now partnered with Art Money
10 payments over 10 months, interest free